

Good Things Come in Threes

After spending the month of April on Sado Island rehearsing, we have three new productions that take the stage this spring.

The word on everyone's lips at Kodo Village is "Legend" (or rather "*densetsu*" in Japanese), which is about to start its on-stage rehearsals. This is the first work by our newly appointed artistic director [Tamasaburo Bando](#), titled "[Kodo One Earth Tour 2012: Legend](#)," and the curtain will rise on May 12th for its opening night in Tokyo. We don't want to give too much away until the tour begins, so you'll have to wait until the June issue of eNews for more details. We can tell you that all five of our junior members are featured in this cast, lowering the average age and upping the excitement as four of them tour with Kodo for the first time. This production will be on the road in Japan until the end of the year, and it will debut abroad in North America in early 2013. For the 2012 schedules, please see page 6.

Currently the first season of [Kodo Special Performances on Sado Island](#), directed by [Chieko Kojima](#), is underway in historic Shukunegi near Kodo Village. This concert is bringing new life and a taiko pulse to the old playhouse, which has been revamped especially for these concerts. Our cast are certainly enjoying welcoming visitors to Sado in spring, complete with a late-run of cherry blossoms, and



Our trucks have been adorned with new team "outfits" for 2012 and are ready for touring

showing them the local hospitality. For this concert, the second year Kodo apprentices are also making an appearance on stage. We're sure this experience in front of audiences will only increase their drive as they work towards becoming Kodo members. Thank you for cheering on our veteran performers and future hopefuls on! These concerts will be held in July as well, so please mark your calendars and come and visit.

The third is the [School Workshop Performance Tour](#), which features the directorial debut of [Yosuke Oda](#), and a fresh new programme with never-before-seen pieces. Yosuke is known for pushing himself to the limits with his drumming, so as artistic director, we shouldn't be surprised at how hard he is working the cast. It's a programme with punch as well as heart. This year the school tour will only tour in spring, due to foreign tours in the fall. We'll be introducing those in detail in our June issue. The cast of seven features four [Dadan](#) performers and three powerful

young women, making for a team with great impact. You'll have a chance to see this programme in public, too, at selected venues during the tour. Details are on the top page of our [website](#).

Audiences in theaters and schools around Japan are in for a brand new sides of Kodo. These new programmes have given Kodo new means of expression and we can't wait to share them with our audiences and hear your feedback on our new works, either on the road or on Sado Island.

In This Issue

What's New, Kodo?	2
DVD "Kodo Honoka"	3
Earth Celebration 2012	4
2012 Schedule	6
Contacts & Information	7



What's New, Kodo?

Take a look at what we were up to
on Sado Island in April.

New Artistic Director Tamasaburo Bando has composed new pieces for the first production he is directing, "Kodo One Earth Tour 2012: Legend." This piece is called "Kaden."



The cast of 7 for the 2012 School Workshop Performance Tour has been preparing fun new material under the direction of performer Yosuke Oda



The apprentices are preparing their rice paddies for planting a new crop.



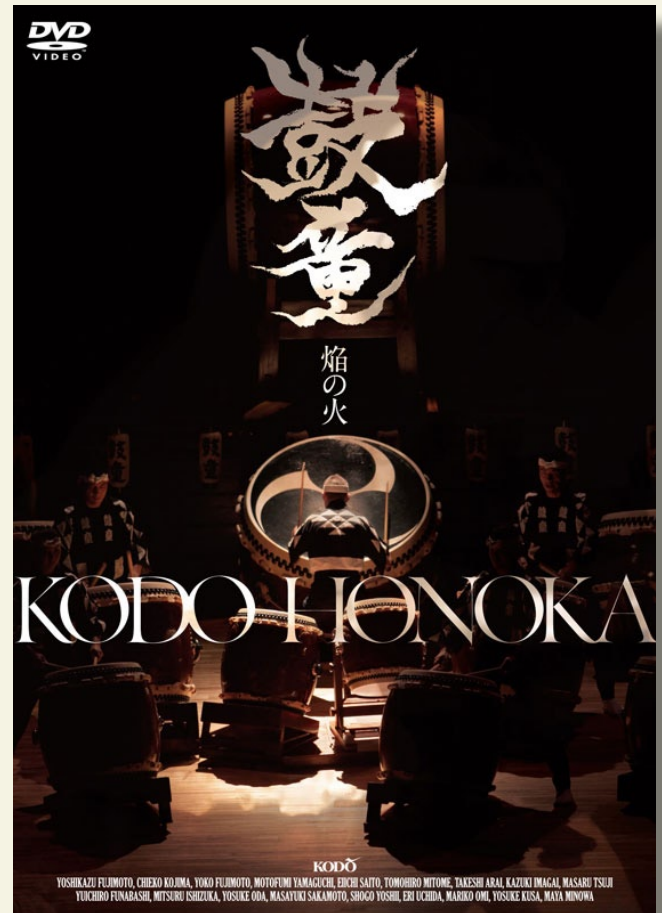
Kodo Special Performances on Sado started on April 27 with blue skies, cherry blossoms, and pre-show taiko to greet the first audience

New 30th Anniversary DVD “Kodo Honoka”

We have some good news! We spent 2011 celebrating Kodo's 30th Anniversary, and in Japan our nationwide tour took a cast including all our founding members gave 70 performances in 44 prefectures around Japan. The powerful stage finale, held at Tokyo's Aoyama Theatre in December, was filmed and we are pleased to announce it will be released on DVD on May 10th!

It has been a while, to say the least, since a Kodo One Earth Tour performance was last released on DVD, so we hope you will add it to your home theater collection. The format is all-region-friendly and the menus and inserts are bilingual, in English and Japanese. The programme and cast for the tour in Japan differed to the anniversary tour in North America and Europe, so if you caught the tour outside Japan, this will be a chance to see our founding members on stage leading the cast in a programme that also showcases their soloist skills.

The graphics for the Kodo 30th Anniversary One Earth Tour featured the name “Kodo” painted in energetic, fiery calligraphy characters by internationally renowned artist Taro Okamoto. The opening number of the performance, “Honoka”(meaning fire's flames), was a new piece dedicated to the great artist, and this DVD adopts the same title. The cast of both veteran performers and newcomers unites honed skills and youthful power to showcase Kodo's past and present in a performance that commemorates the history of Kodo to date.



30th Anniversary DVD “Kodo Honoka”

Featured Programme:

Honoka / Tomoe / Stride / Matoka Saso,
Momotsuzuri / Kiyari, Miyake / Harukanaru Mine /
Sora / Ogi Oiwake / O-daiko (Yoshikazu Fujimoto) /
Mikuni, O-daiko (Tomohiro Mitome) / Zoku /
Tomorrow

On Sale: May 10, 2012

Price: 5,000 yen (tax inc.)

[Friends of Kodo Price:](#) 4,500 yen (tax inc.)

Length: 106 mins.

Region Code: ALL (Can be watched in any locale
on any player.)

Specifications: Stereo, 5.1 CH. surround

Product Code: OD-007

Sales Agency: [Otodaiku](#)

Available at the [Kodo Online Store](#) and at
Kodo performance venues

Earth Celebration 2012 with Kodo on Sado Island

It's that time of year again! We are busy with preparations for Earth Celebration, the international performing arts festival hosted by Kodo & Sado. This year marks the festival's milestone 25th anniversary, and we've prepared a lineup that highlights the amazing natural and cultural treasures of Sado Island. We're about to launch a brand new festival website, so join us on [Facebook](#) to hear as soon as it goes live. Join us on Sado Island to soak up the summer sun, music, and good times for three days, August 17 (Fri) - 19 (Sun).

EC Highlight 1: Firing up EC with a Festive Kodo Performance on Day One

Special Fringe events such as "Dance Night" have been held at Harbour Market to date, but this year we are taking the action up the hill (e) to the main Shiroyama Concert stage. Earth Celebration 2012 is going to be sizzling hot from the very first beat.

*Aug. 17 (Fri) Kodo "Opening Night" (a-b)
/ Artistic Director: Shogo Yoshii (Kodo)*

EC Highlight 2: Special EC Version of Tamasaburo Bando's Kodo "Dadan" in Shiroyama Park

In February this year, [Kodo "Dadan"](#) rocked the European performing-arts scene with four sold-out shows in its foreign debut at Théâtre du Châtelet in Paris. At EC, "Dadan" will be performed as a special programme outdoors for the first time. Don't miss the young Kodo men in this bold exploration of pure non-stop physical percussion on the Shiroyama stage!

*Aug. 18 (Sat) Kodo "Dadan" EC Special
(c) / Artistic Director: Tamasaburo Bando*

EC Highlight 3: Collaboration with Special Guest Hiromitsu Agatsuma

Kodo and shamisen player [Hiromitsu Agatsuma](#) were instantly inspired to collaborate after their first meeting last year. Both Kodo and Agatsuma base their music on traditional Japanese instruments and share their unique sounds with audiences abroad, so this year's high-energy collaboration is certain to resonate around the world. You won't want to miss this exciting EC finale!

*Aug. 19 (Sun) "Shukusai" Kodo with Guest
Artist Hiromitsu Agatsuma (d) / Artistic
Director: Yuichiro Funabashi (Kodo)*

continued on next page



a



b



c



d



e

Earth Celebration 2012*continued from page 4***EC Highlight 4: Fringe Stage Joins Forces with Harbour Market**

Harbour Market (f) in Ogi Port Park is popular for its ethnic feel and eclectic line up of stalls selling foods, crafts and unique items from around the world. This year, Harbour Market will also house the Fringe stage (g), a free venue where EC guests can share some of their own artistic expressions. You'll see the Kodo Fringe, Special Fringe, and general performances all right here in the open market. Watch, eat, laugh, and have a wonderful time at Ogi Port Park!

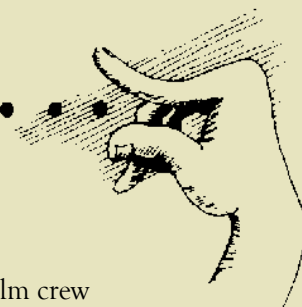
**EC Highlight 5: Hands-On Fun and Local Encounters**

As always, we are planning a colorful array of workshops (h) and events (i) offering experiences unique to Sado Island!

The [Earth Celebration 2012 Official Website](#) opens in Japanese on May 10 and in English on May 20 (TBC). Tickets on sale June 1st.



in brief...



For two weeks in April, a film crew from ARTE in France was following Kodo, in particular the Kodo apprentices, to make a documentary.

This photo is from the goodbye party at the apprentice centre on the crew's last night on Sado. We'll let you know when the details of the broadcast are available later this year. Stay tuned.



Kodo Performance Schedule 2012

KODO ONE EARTH TOUR 2012: LEGEND

May - June: [Japan](#)

Tokyo, Saitama, Nagano, Osaka, Wakayama, Aichi, Mie, Kyoto, Hyogo, Kagawa, Kochi, Ehime, Okayama, Gifu

September - October: [Japan](#)

Niigata, Iwate, Yamagata, Fukushima, Ibaraki, Shizuoka, Aichi, Shiga, Osaka, Hyogo, Shimane, Tottori, Yamaguchi, Fukuoka, Nagasaki, Miyazaki, Kagoshima, Nagano

SCHOOL WORKSHOP-PERFORMANCE TOUR IN JAPAN

May - June: Shimane, Ehime, Nagasaki, Kumamoto, Kagoshima, Tokyo, Niigata

KODO DADAN CONCERTS 2012 Presented by Rolex

July: Japan

Tokyo, Kanagawa, Aichi, Kumamoto, Kyoto

EARTH CELEBRATION 2012

August 17 (Fri) - 19 (Sun): Sado Island, Japan (Details TBA mid-May 2012)
Shiroyama Concerts with special guest shamisen player [Hiromitsu Agatsuma](#), & a unique version of [Dadan](#) directed by Tamasaburo Bando

KODO & TAIKOZ IN CONCERT - AUSTRALIA TOUR

September: Canberra, Melbourne, Newcastle, Sydney (Further dates TBA)

SOLO & SMALL GROUP PROJECTS, SPECIAL EVENTS, WORKSHOPS, NEWS & INFORMATION

Please visit the [top page of our website](#) and scroll down for details.



Tickets for [Kodo Dadan Concerts](#) in Japan are on sale now. The cast will also be performing outdoors for the first time on Day 2 of [Earth Celebration 2012](#) on Sado Island.

Kodo One Earth Tour 2012: Legend

~ JAPAN ~

May - June, September

Schedule is subject to change. For up-to-date schedules and box office details, please visit our [website](#).

- May 12: Ota Ward, Tokyo
- May 16: Kita Ward, Tokyo
- May 19: Kumagaya, Saitama **SOLD OUT**
- May 20: Chiyoda Ward, Tokyo
- May 24: Nagano City
- May 26: Osakasayama, Osaka
- May 28: Tanabe, Wakayama
- May 30: Kota, Aichi
- May 31: Yokkaichi, Mie
- June 1: Nagaokakyo, Kyoto
- June 3: Kobe, Hyogo
- June 4: Settsu, Osaka
- June 7: Takamatsu, Kagawa
- June 8: Kochi City
- June 10: Yawatahama, Ehime
- June 12: Tsuyama, Okayama
- June 13: Takahashi, Okayama
- June 16: Gero, Gifu
- September 9: Kashiwazaki, Niigata
- September 11: Kuzumaki, Iwate
- September 12: Kitakami, Iwate
- September 14: Yamagata City
- September 15: Koriyama, Fukushima
- September 16: Hitachinaka, Ibaraki
- September 20: Shizuoka City
- September 23: Fuso, Aichi
- September 26: Hikone, Shiga
- September 27: Ibaraki, Osaka
- September 30: Yabu, Hyogo



Subscribe to Kodo eNews
Not subscribed to eNews yet?
[eNews Subscription Center](#)

Share With Friends
Know someone who
might enjoy Kodo eNews?
To share with a friend,
please click "Forward Email"
in the Kodo eNews email footer.

Feedback
Topics you'd like to see?
Stuff you can't find?
Problems with the PDF?
We want to know!
[Kodo eNews Feedback](#)



In the wake of disaster, Kodo started the Heartbeat Project, a multifaceted undertaking designed to support relief efforts and the people of the regions affected by the Tohoku Pacific Earthquake.

We are making new recordings and participating in charity concerts, fund-raising events, etc. Thank you for your continued support. For updates, please visit our [website](#).

KODŌ

New Album:
Kodo Akatsuki



Fashionably late cherry blossoms on the grand old Hojobo cherry tree in Osaka.

Resources

[Kodo Homepage](#)
[Kodo on Facebook](#)
[Kodo Tour and Performance Schedules](#)
[Kodo on YouTube](#)
[Kodo CD Listening Booth](#)
[Kodo Bravia Promotion Video](#)
[Friends of Kodo](#)
[Kodo Online Store \(English\)](#)

Contacts

Performances, Workshops, Bookings, and All General Inquiries
Email: heartbeat@kodo.or.jp

Kodo CDs, Merchandise, Instruments
Email: store.eng@kodo.or.jp

Friends of Kodo
Email: friends.eng@kodo.or.jp

Postal Address and Contact Numbers

Kodo, Kodo Village,
148-1 Ogi Kanetashinden, Sado, Niigata 952-0611, Japan
Tel. +81-(0)259-86-3630
Fax. +81-(0)259-86-3631
Email: heartbeat@kodo.or.jp



[Get Adobe Reader](#)

For full interactive performance,
Kodo eNews is best viewed with Adobe Reader.

Photography in this issue: Shizuka Minami, Maiko Miyagawa, Takashi Okamoto, Buntaro Tanaka (Bt_arts), Chieko Wales, and Kodo's Yasuhiko Ishihara, Taro Nishita, Junko Susaki, Takuro Susaki, Melanie Taylor
EC artwork: Hideaki Masago
Heartbeat Project logo design: Haruna Kino
In Brief illustration: [Johnny Wales](#)

Editorial, design and production: Melanie Taylor and Chieko Wales
Main design: Tam Stewart
Kodo eNews 2012. Kitamaesen Co., Ltd. All rights reserved.